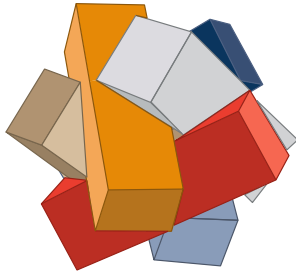


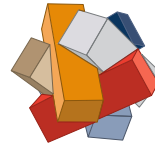


Sustainable Play



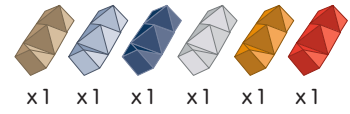
4652 Rectangular Puzzle | Rechteckpuzzle Puzzle Rectangulaire | Puzzle con rettangoli

- Put your concentration and problem-solving skills to the test by inserting one peg at a time to assemble the 3D Puzzle.
- Stellen Sie Ihre Konzentrations- und Problemlösungsfähigkeit auf die Probe, indem Sie einen Stift nach dem anderen einsetzen, um das 3D-Puzzle zusammenzusetzen.
- Concentrez-vous pour résoudre des problèmes. 2preuve difficile : assembler les barres pour en faire un puzzle 3D.
- Metti alla prova la tua concentrazione e capacità di risoluzione dei problemi inserendo un piolo alla volta per assemblare il Puzzle 3D.



3-99 Y

- Difficulty rate
 - Schwierigkeitsgrad
 - Niveau de difficulté
 - Tasso di difficoltà
- ★★★☆☆

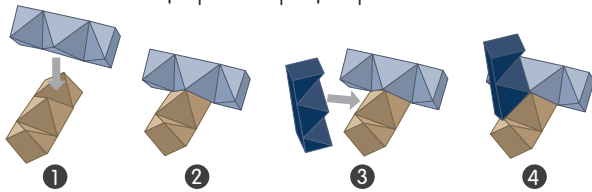


x1 x1 x1 x1 x1 x1

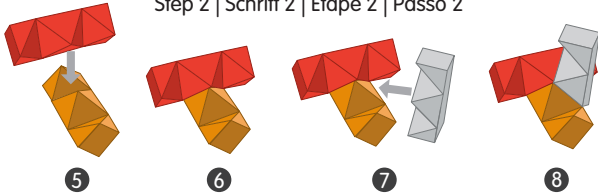
Component | Inhalt |
Composition | Componenti del set

How to build the puzzle | So löst man das Puzzle |
Comment construire le puzzle ? | Come costruire il puzzle

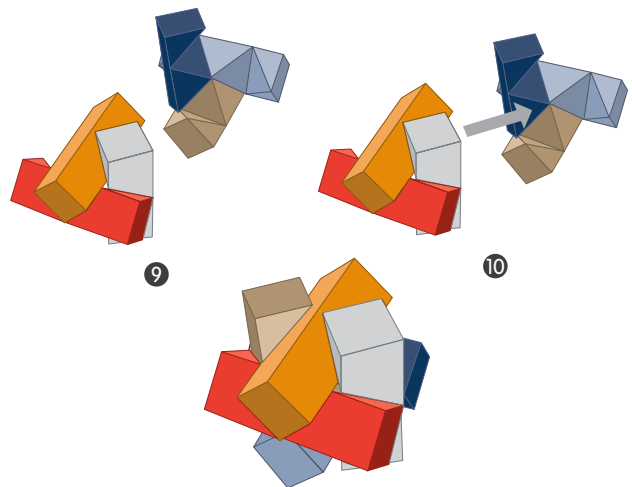
Step 1 | Schritt 1 | Étape 1 | Passo 1



Step 2 | Schritt 2 | Étape 2 | Passo 2



Step 3 | Schritt 3 | Étape 3 | Passo 3



PlanToys.com